



FB1691 PRAGUE TOILET

Equipped with a 6 and 4 liters double flush system

PRODUCT DESCRIPTION:

White porcelain
Contemporary style
Fully glazed trapway
One piece toilet
Integrated soft and removable close seat
1000 + grams

24 h

BOX SIZE:

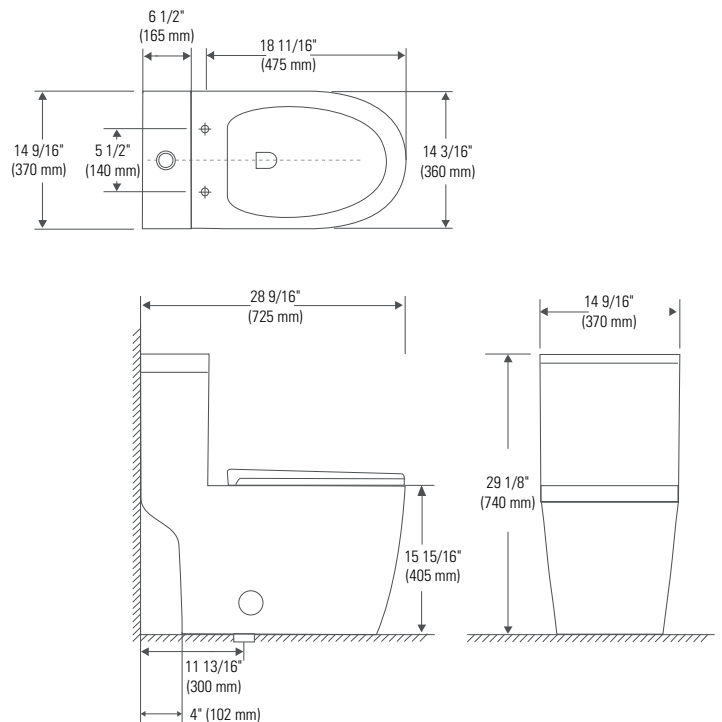
30" x 16" x 30"

NET WEIGHT:

99 lbs

GROSS WEIGHT:

105 lbs



Meets Canadian Standards Association standard B651-04.



Certification ECORESPONSIBLE
First manufacturer of bathroom products in North America to be certified ecoresponsible.



Produits Neptune

6835, Picard street, Saint-Hyacinthe (Quebec) J2S 1H3
Phone: (450) 773-7058 - produitsneptune.com

REV: 10-20