

# PIA 3260 AFR

60 3/8" x 31 7/8" x 19 1/2"



## PRODUCT DESCRIPTION:

With tiling flange 2 sides  
R2L and L2R  
Above-the-Floor Rough (AFR)  
Adjustable feet  
Contemporary style  
Gloss finish resistant to stains and discoloration  
Acrylic thermoformed and reinforced with fiberglass

10 days

|                             |                      |
|-----------------------------|----------------------|
| <b>WATER CAPACITY:</b>      | <b>IMMERSION:</b>    |
| 56.5 Imperial Gallons       | 12 1/4 po            |
| <b>BOX SIZE:</b>            |                      |
| <b>33 1/2 x 22 1/2 x 61</b> |                      |
| <b>NET WEIGHT:</b>          | <b>GROSS WEIGHT:</b> |
| 90 lbs                      | 105 lbs              |

## GENERAL OPTIONS

Acrylic colors: white Standard

Available in left or right version

Drain D105 (20"): chrome finish 62.4020.102.60

Black neck pillow (12" x 4") 18.6000.100.20

## ACTIV-AIR OPTIONS

Finish for Activ-Air jets: white Standard  
Other: chrome

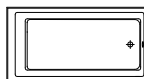
Blower hose extension 72" 95.5013.167.00

Blower hose extension 96" 95.5013.168.00

Blower extensions are necessary when the blower is located more than 4' from the pneumatic control.

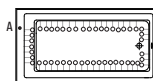
\* Customized product, non cancellable, non returnable.

\* All systems and options automatically come in the same colour as the bathtub unless otherwise specified on the purchase order.



Bathtub only left drain  
Bathtub only right drain

E10.20712.5800  
E10.20712.5300



Activ-Air left drain E15.20712.580010  
Activ-Air right drain E15.20712.530010

Included: 32 Activ-Air micro-jets,  
one blower with heating element (200 W)  
and one pneumatic control.

—○ : Activ-Air jets

A : Activ-Air control

Note : The blower is never installed.



Intertek



Certification Ecoresponsible  
First manufacturer of bathroom products in  
North America to be certified ecoresponsible.



Produits Neptune

ENTREPRENEUR

6835, Picard street, Saint-Hyacinthe (Quebec) J2S 1H3  
Phone: (450) 773-7058 - produitsneptune.com

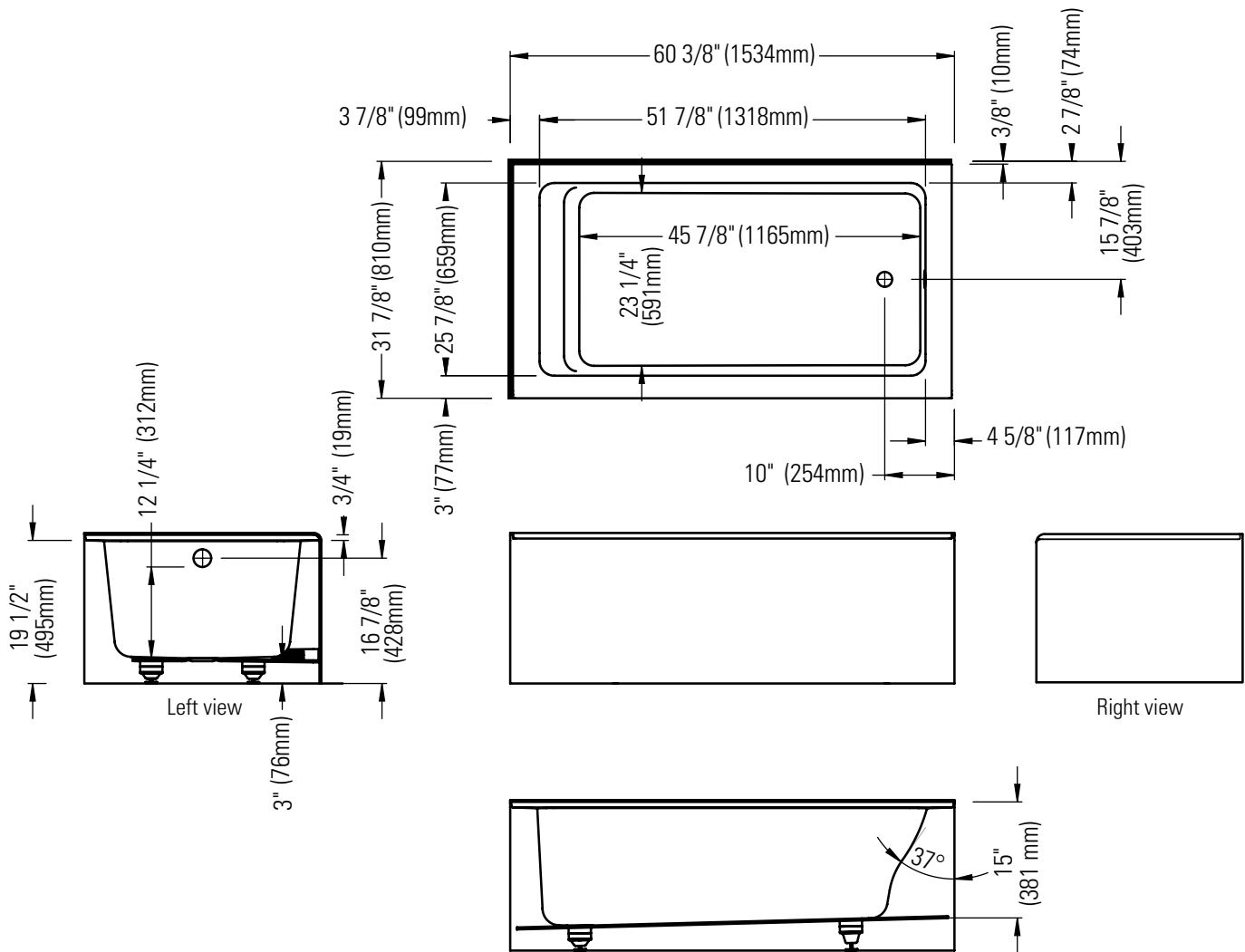
REV: 08-21



Produits Neptune  
ENTREPRENEUR

## PIA 3260 R2L AFR

Bathtub



\*All dimensions are approximate and subject to change without notice.  
Please refer to the installation guide before beginning the installation

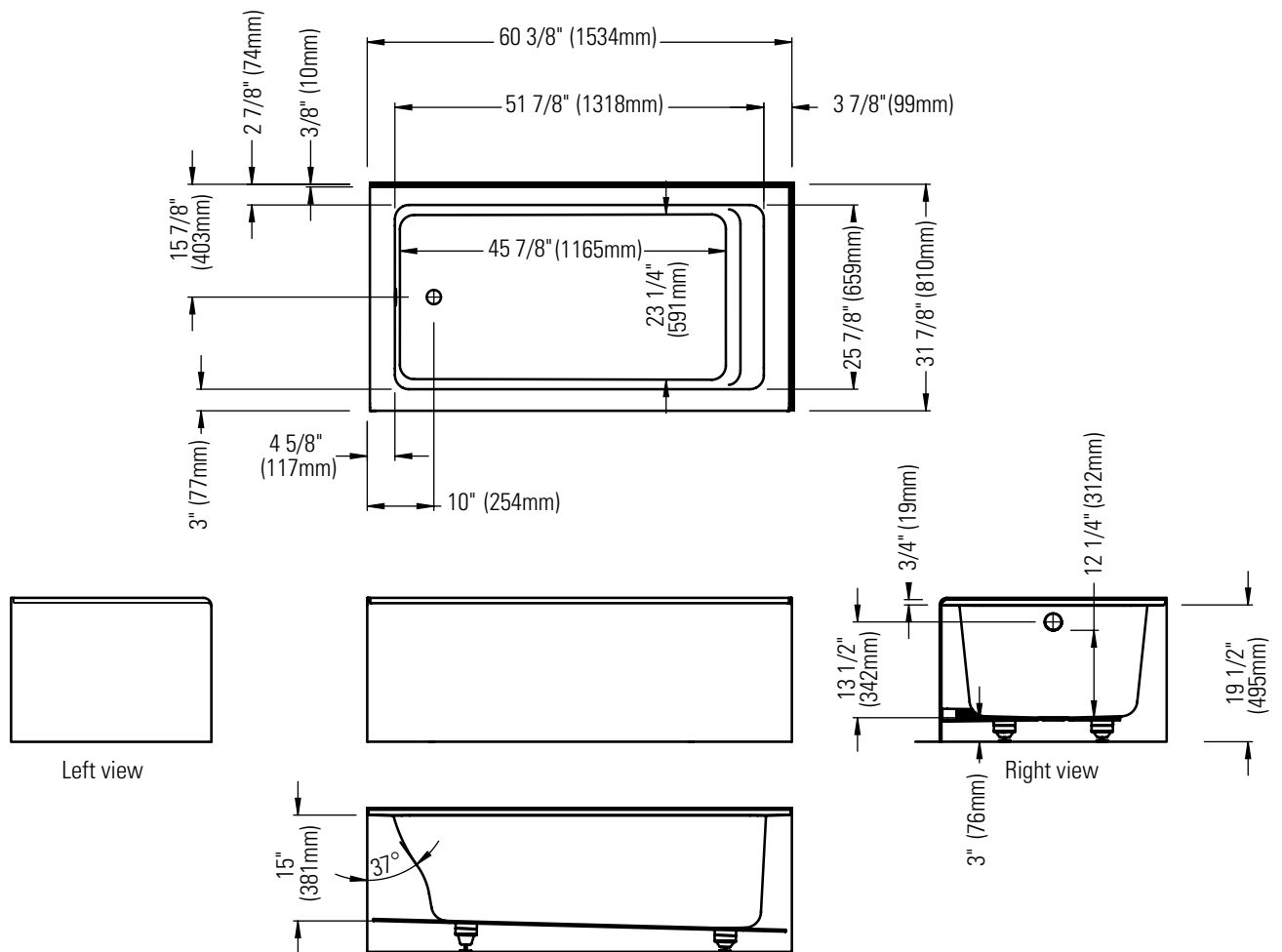


Produits Neptune

ENTREPRENEUR

## PIA 3260 L2R AFR

Bathtub



\*All dimensions are approximate and subject to change without notice.  
Please refer to the installation guide before beginning the installation