



**Brinx®**  
Top-mount Bar Sink  
**K-3674**

**Features**

- 21-inch minimum base cabinet width.
- Single bowl.
- 6-inch depth.
- Small size fits compact spaces.

**Material**

- Handcrafted from 14-gauge stainless steel.

**Installation**

- Top-mount

**Recommended Accessories**

K-8801 Sink Strainer  
K-8799 Sink Strainer



ADA

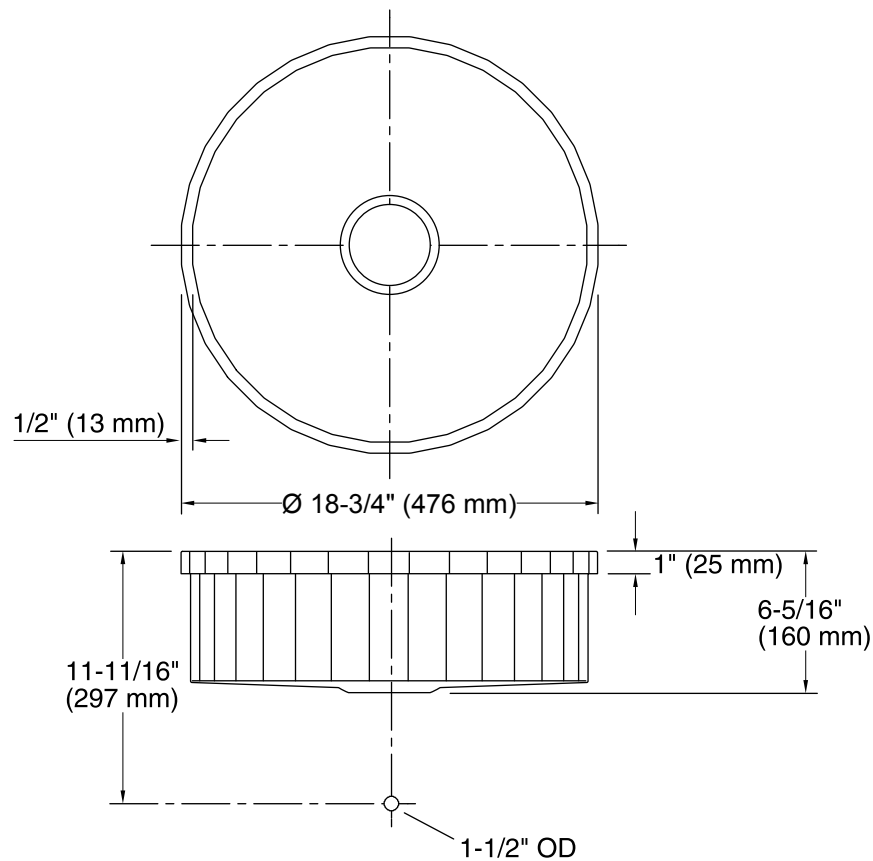
**Codes/Standards**

ASME A112.19.3/CSA B45.4  
ADA  
ICC/ANSI A117.1

**Lifetime Limited Warranty for**

**KOHLER® Stainless Steel Sinks**

See website for detailed warranty information.



## Technical Information

All product dimensions are nominal.

Bowl configuration:	Single
Installation:	Top-mount
Min. base cabinet width:	21" (533 mm)
Bowl area (Only):	Diameter: 17-3/4" (451 mm) Bowl depth: 6" (152 mm)
Drain hole:	3-5/8" (92 mm)
Template:	1220554-7, required, included

## Notes

Install this product according to the installation instructions.

ADA compliant when installed to the specific requirements of these regulations.